

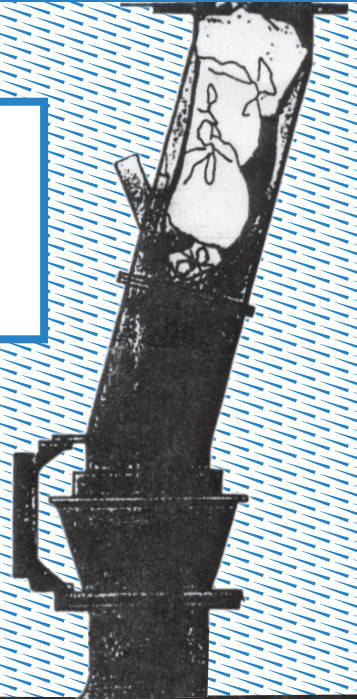
The Roosevelt Island AVAC System

ITS PROPER USE AND CARE

NOTE

If you live, work, or play on Roosevelt Island
you are an Operator of the AVAC

READ THIS CAREFULLY



A HANDBOOK

To increase the life and efficiency of your Automated Vacuum Collection (AVAC) system

THE CHILD SCHOOL STUDENTS

José Benítez

Charlie Brister-Ramírez

Freddy Domenech

James Patrick Escalante

Avery Fennick

Isaack Nudell

Matt Patterson

Stephen Purk

Isaiah Reed

CUP CREW

Valeria Mogilevich, Teaching Artist

Christine Gaspar

Juliette Spertus

Mariana Mogilevich

Samir Shah

Maria Sotiropoulou

SPECIAL THANKS TO

Camille Moquhuino

and Maari De Souza

at The Child School

Jerry Sorgente, TJ Krysiewicz, and
Billy Dash at the AVAC facility

Adam Michaels, Guglielmo Rossi,
and Chris Wu at Project Projects

R.I.P Stinky the Cat

Support for this project was provided in part
by the Bay and Paul Foundations

ABOUT CUP

The Center for Urban Pedagogy (CUP) is a nonprofit organization that uses art, design, and visual culture to improve the quality of public participation in urban planning and community design. Find out more at: anothercupdevelopment.org

Roosevelt Islander:

Congratulations! You are the proud owner of a pneumatic garbage disposal system.

Ever wonder why you don't see garbage trucks on the street? Or why there aren't any smelly piles of trash bags on the corner? You can't see it, you can't hear it, but just inches beneath your feet, your garbage is shooting through a network of tubes at 35 miles per hour. Your leftovers, your empty toothpaste tubes—it's all down there. It's a special system—almost nothing else like it in the country.

In 2010, CUP and students from Roosevelt Island's The Child School visited the Island's trash collection facility to learn how the garbage from their school gets whisked away and processed. Now we have a few words of advice on how to care for your special system. The better you understand the system of pneumatic tubes, the better it can work. If any big decisions need to be made about your system in the future, you'll want to be part of that conversation. So get to know this incredible machine today! While you're at it, show this book to your neighbors so they stop jamming the tubes.

DON'T...

(Fill in the blank.)

Use Water as a
lubricant for Trash



OR ELSE...

(Fill in the blank.)

A Bridge of residue
will build around the
pipes.

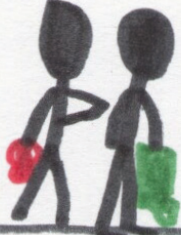
By the way
Television
gets great
good ✓



DON'T...

(Fill in the blank.)

Throw big objects
down the chute



OR ELSE...

(Fill in the blank.)

It will clog the
chute.



DO...

(Fill in the blank.)

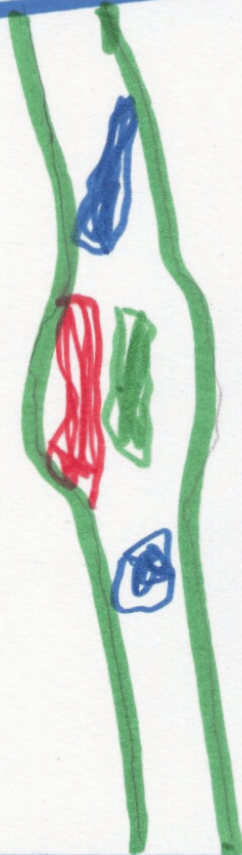
Sell big objects
on Ebay.



TO PREVENT...

(Fill in the blank.)

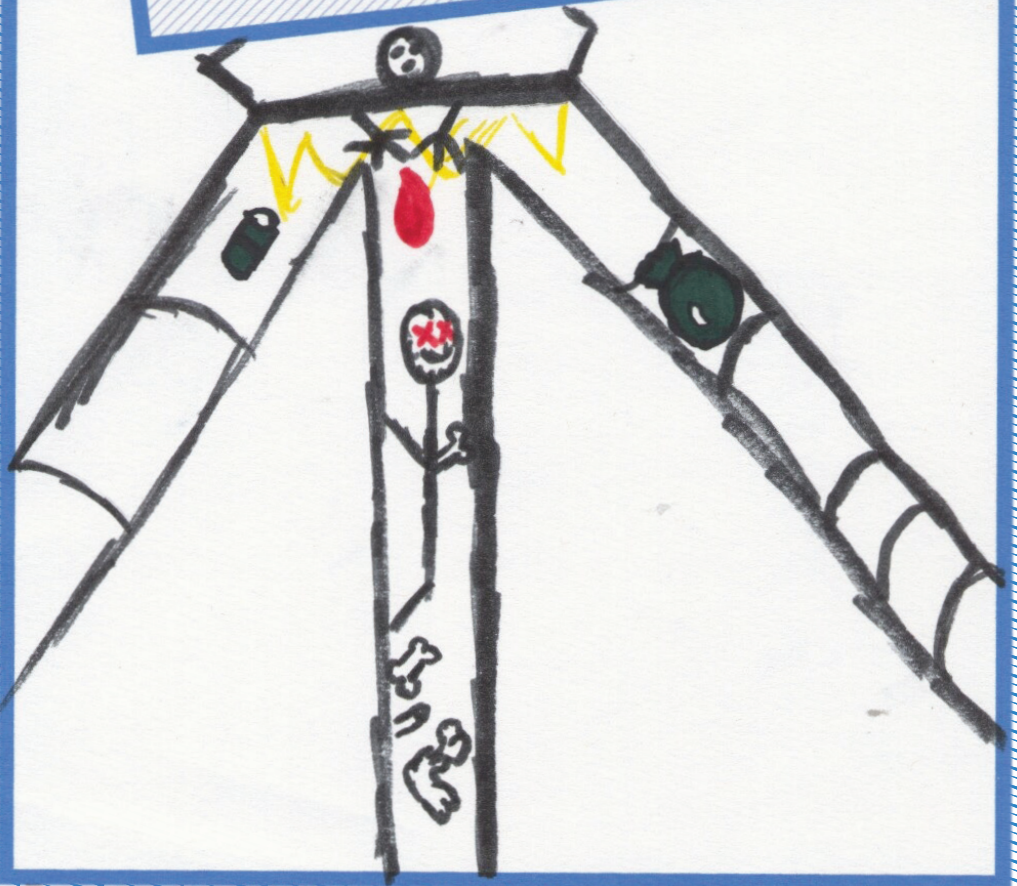
Clogging the
chute.



DON'T...

(Fill in the blank.)

Dump a dead body
down the chute



OR ELSE...

(Fill in the blank.)

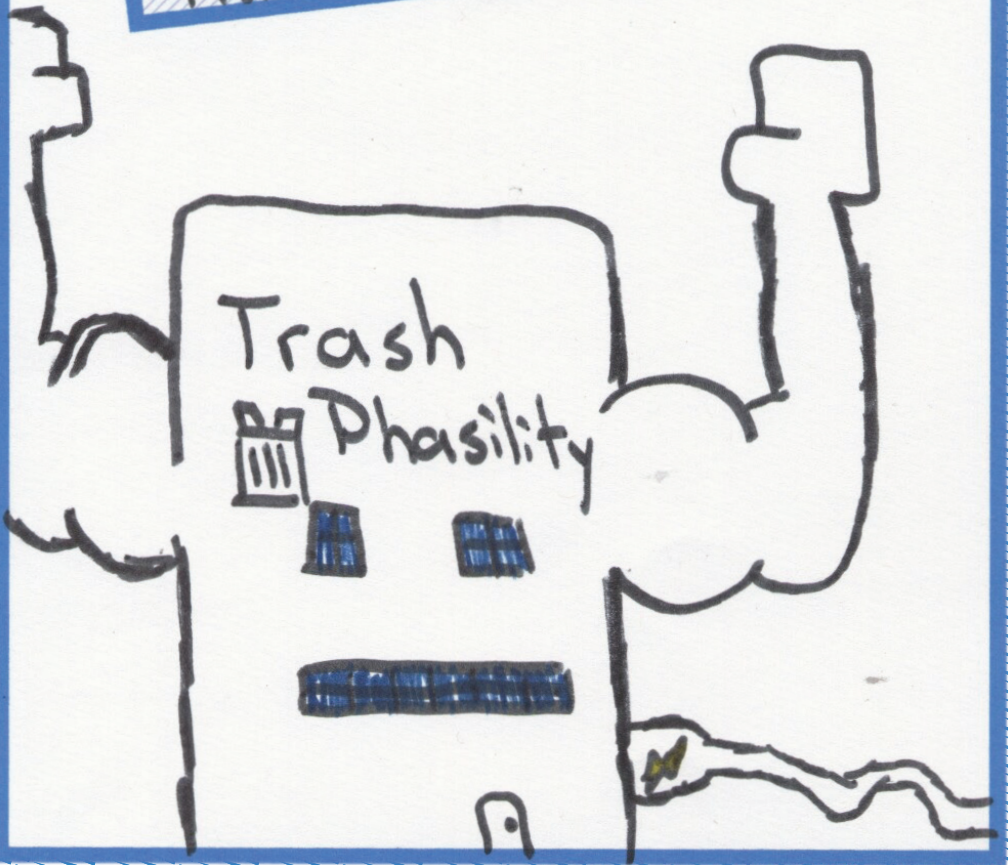
You'll be i trouble



DO...

(Fill in the blank.)

Recycle, conserve
energy to help take out the
trash!



TO PREVENT...

(Fill in the blank.)

Stuck trash, and high
air pressure leaks!



DON'T...

(Fill in the blank.)

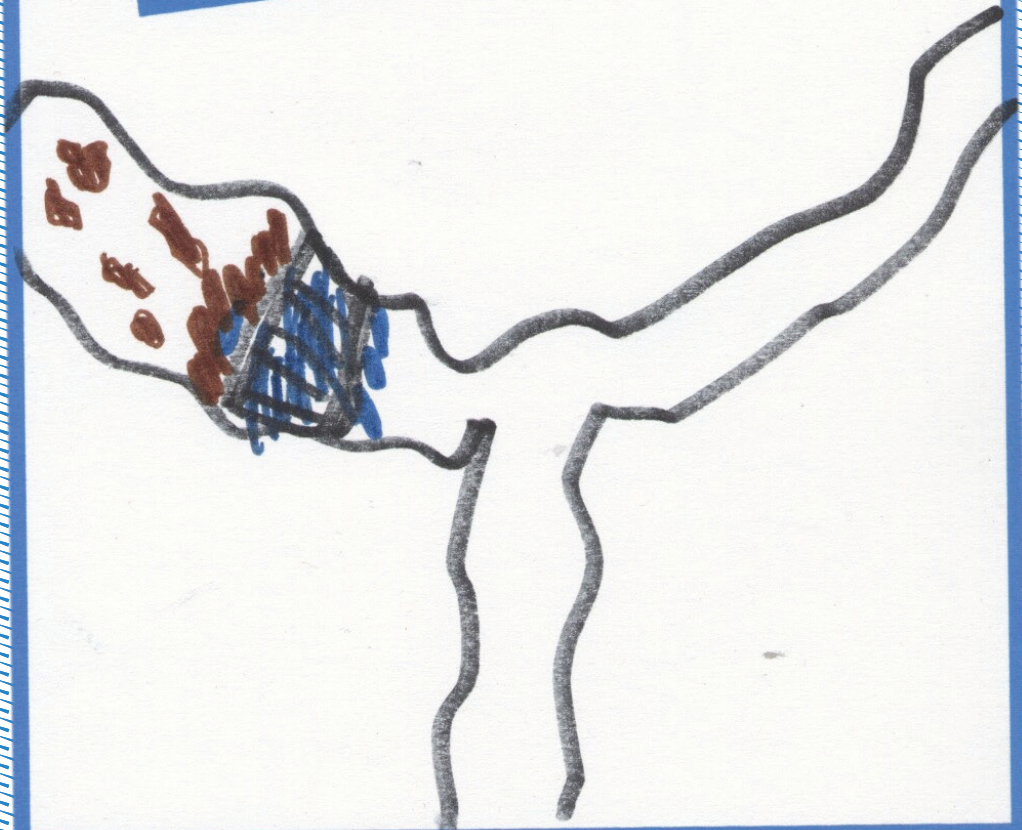
Don't throw wet paper
in the trash



OR ELSE...

(Fill in the blank.)

You can clog
the pipes



DON'T...

(Fill in the blank.)

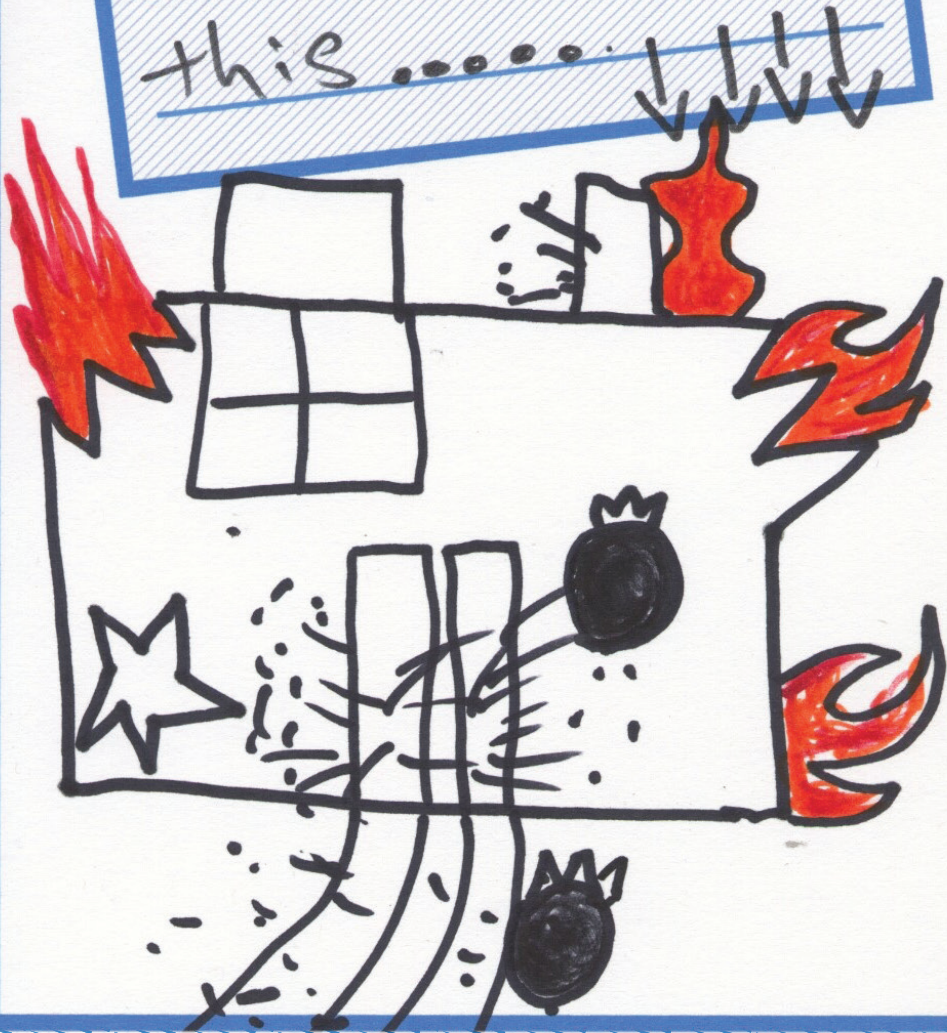
put flaming, alcohol, or
Bottles down the shaft.



OR ELSE...

(Fill in the blank.)

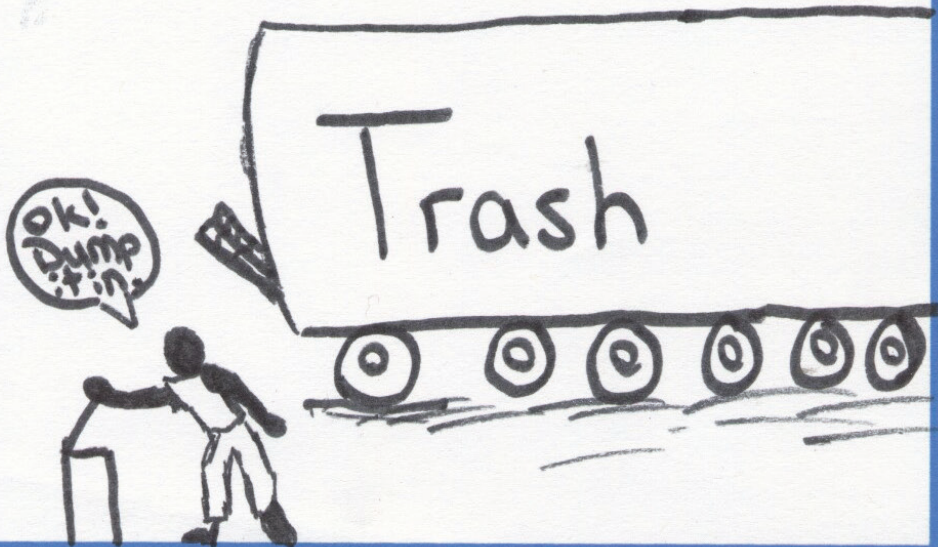
It can lead to
this



DON'T...

(Fill in the blank.)

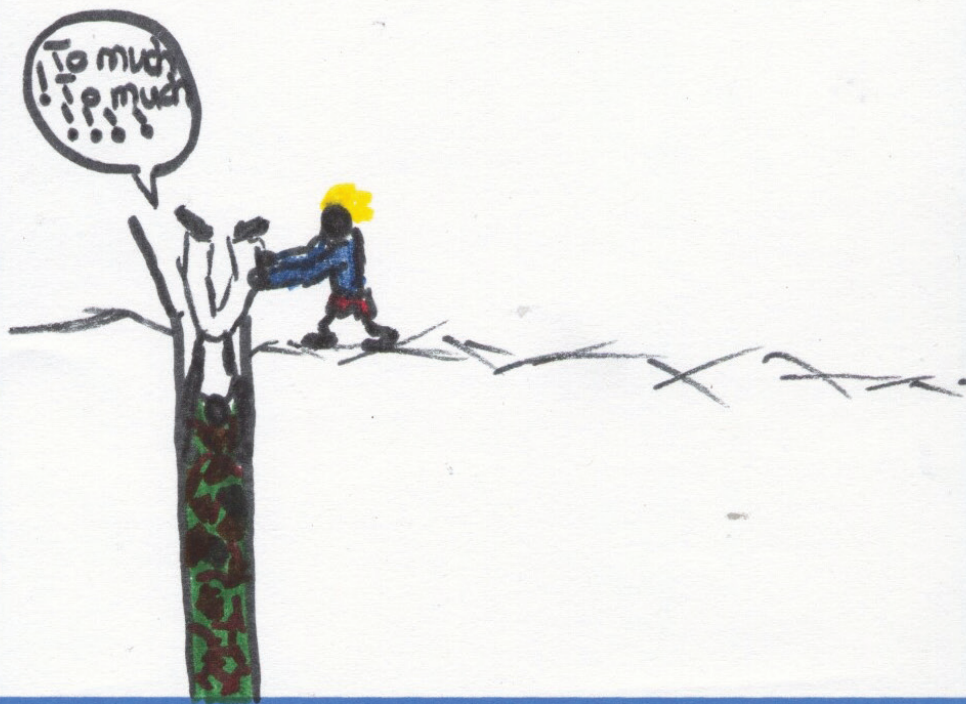
Don't put too much trash into a
garbage chute!



OR ELSE...

(Fill in the blank.)

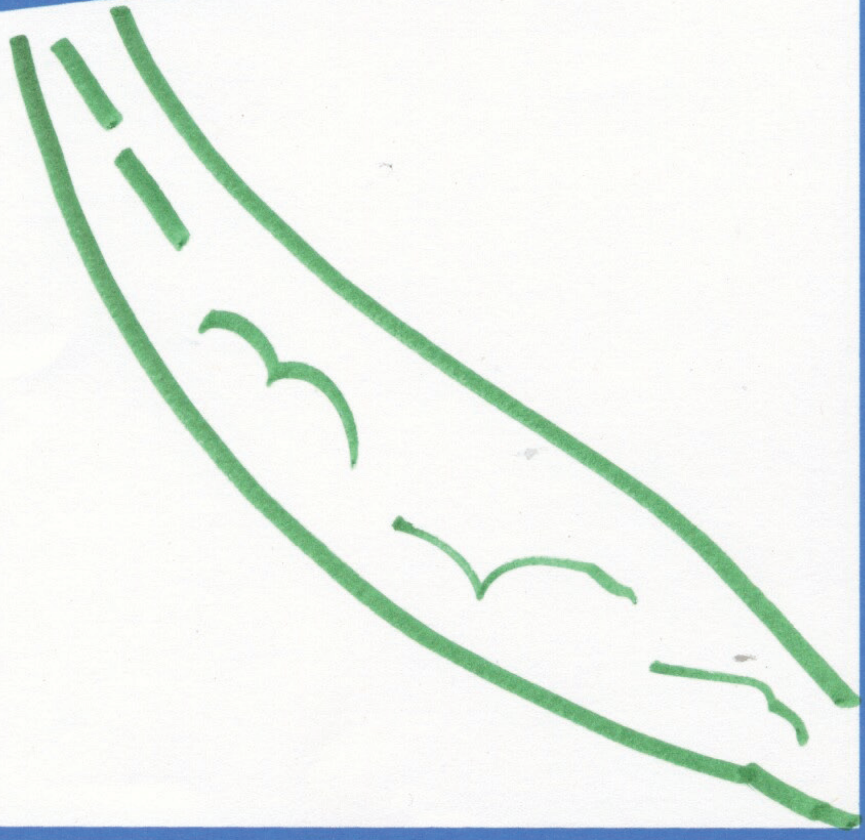
It will be backed up for
about a week!



DO...

(Fill in the blank.)

Make sure that
the Aval System
is taken care of



TO PREVENT...

(Fill in the blank.)

The Aval system

being shut down now

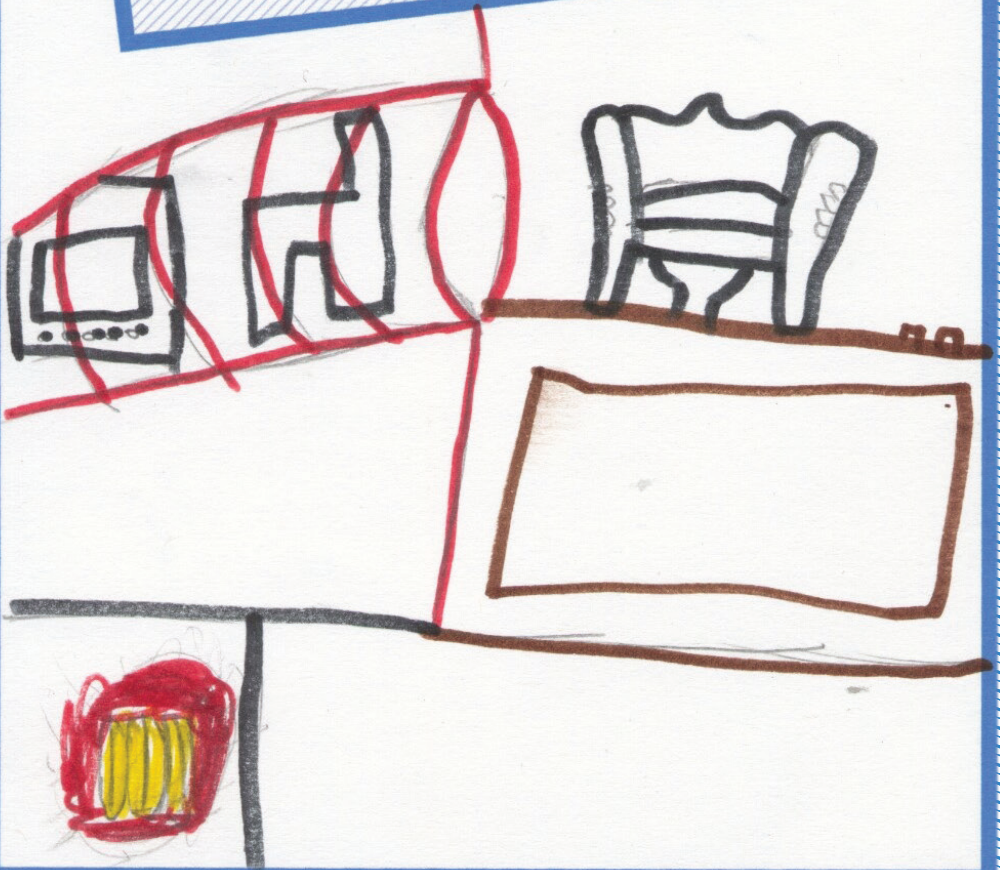
R.I. being full of garbage.



DON'T...

(Fill in the blank.)

Rely solely on the
chute!



OR ELSE...

(Fill in the blank.)

KA-BOOM



